

## HANDRAILS

### PALLET CONTENTS (1 PALLET)

Handrail 2" x 2".  
Twenty (20 pieces wide and stacked on top of each other).

### PALLET SIZE

**Curtain-side truck delivery with side unloading**  
Canada: Two (2) block pallets of 24" x 44"  
USA: Three (3) block pallets of 24" x 44"

**Rear dock delivery with rear unloading**  
One (1) pallet of 16' x 44"

### MAXIMUM TOTAL HEIGHT (pallet included)

± 66"

### TOTAL POUNDS PER PALLET

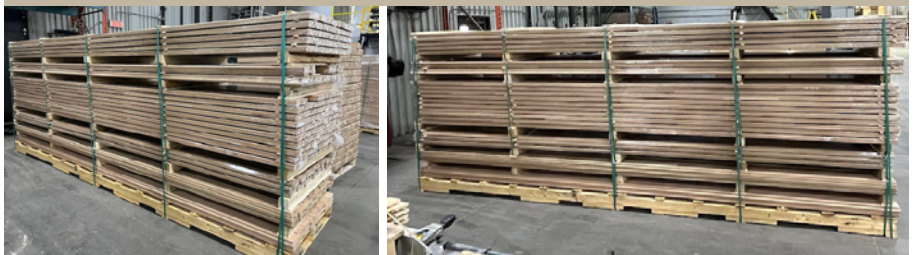
± 1 250 lb (1.2 lb/pl)\*

\*This information is based on a 1000' pallet of 2" x 2" handrail.

### PACKING METHOD

- Wood stickers are installed between the pallet and the products.
- Wood stickers are installed to stabilize the load. The number depends on the profile.
- Every ordered item (SKU) that meets 500' is separated by wooden blocks.
- Wood stickers are used to separate products under 500'.
- Total of four (4) nylon straps. Two (2) nylon straps are fastened to each pallet.
- Each pallet is covered in clear shrink wrap.

Rear dock delivery with rear unloading



Curtain-side truck delivery with side unloading



## TREADS



<b>PALLET CONTENTS (1 PALLET)</b>	200 treads/pallet 4 rows of 50 treads
<b>PALLET SIZE</b>	44" x 48"
<b>MAXIMUM TOTAL HEIGHT (pallet included)</b>	± 66"
<b>TOTAL POUNDS PER PALLET</b>	± 2 650 lb (pounds per tread: 13.1 lb)*

\*This information is based on a pallet of 48" x 1 1/6" x 10 1/2" treads.

### PACKING METHOD

- Wood stickers are installed between the pallet and the products.
- Wood stickers are installed every ten (10) rows to stabilize the load.
- Every ordered item (sku) is separated by wooden blocks.
- Wood stickers are used to separate products if the quantity does not meet the minimum requirements.
- Two (2) nylon straps are fastened to each pallet.
- Each pallet is covered in clear shrink wrap.

## RETRO TREADS



<b>PALLET CONTENTS (1 PALLET)</b>	304/pallet for nose 1" x 1" (4 wide x 76 high) 225/pallet for nose 1" x 1 7/8" (3 wide x 75 high)
<b>PALLET SIZE</b>	44" x 48"
<b>MAXIMUM TOTAL HEIGHT (pallet included)</b>	± 65"
<b>TOTAL POUNDS PER PALLET</b>	± 2 600 lb (pounds per piece : 8.6 lb)*.

\*This information is based on a pallet of 11 1/2" x 48" treads.

### PACKING METHOD

- Wood stickers are installed between the pallet and the products.
- Wood stickers are installed every ten (10) rows to stabilize the load.
- Every ordered item (SKU) is separated by two (2) wooden blocks.
- Two (2) nylon straps per pallet are fastened to the pallet.
- Each pallet is covered in clear shrink wrap.

## STRINGERS AND FALSE STRINGERS

<b>PALLET CONTENTS (1 PALLET)</b>	Four (4) rows of stringers
<b>PALLET SIZE</b>	Two (2) pallets of 24" long x 44" wide (spaced from each other).
<b>MAXIMUM TOTAL HEIGHT (pallet included)</b>	± 48"
<b>TOTAL POUNDS PER PALLET</b>	± 832 lb. For 256' (3.25 lb per linear foot)*

\*This information is based on a pallet of stringers 9 1/2" x 1 3/6" x 16".

### PACKING METHOD

- Wood stickers are installed between the pallet and the products.
- Wood stickers are installed every ten (10) rows to stabilize the load.
- Every ordered item (SKU) that meets 500' is separated by two (2) wooden blocks.
- Total of four (4) nylon straps. Two (2) nylon straps are fastened to each pallet.
- Each pallet is covered in clear shrink wrap.

## RISERS

<b>PALLET CONTENTS (1 PALLET)</b>	500 pieces/pallet 100 pieces high by 5 pieces wide
<b>PALLET SIZE</b>	44" x 48"
<b>MAXIMUM TOTAL HEIGHT (pallet included)</b>	± 65"
<b>TOTAL POUNDS PER PALLET</b>	± 3 300lb (pounds per piece : 6.7 lb)*

\*This information is based on a pallet of 8" x 48" risers.

### PACKING METHOD

- Wood stickers are installed between the pallet and the products.
- Wood stickers are installed every ten (10) rows to stabilize the load.
- Every ordered item (SKU) is separated by two (2) wooden blocks.
- Two (2) nylon straps per pallet are fastened to the pallet.
- Each pallet is covered in clear shrink wrap.

## NEWEL POSTS



### PALLET CONTENTS (1 PALLET)

200 posts / pallet

### PALLET SIZE

44" x 48" for 36" to 48" long posts  
Pallet may be same size or longer for posts 54" long and up

### MAXIMUM TOTAL HEIGHT (pallet included)

± 66"

### TOTAL POUNDS PER PALLET

± 2 900 lb (pounds per post: : 14.4 lb)\*

\*This information is based on a pallet of 3 1/2" x 48" posts.

### PACKING METHOD

- Wood stickers are installed between the pallet and the products.
- Wood stickers are installed every five (5) rows to stabilize the load.
- Every ordered item (SKU) is separated by two (2) wooden blocks when quantity is 50 and up.
- Wood stickers are used to separate products when the quantity is under 50 units.
- Two (2) nylon straps are fastened to each pallet.
- Each pallet is covered in clear shrink wrap.

## NOSINGS

### PALLET CONTENTS (1 PALLET)

Nosing 4 1/4" width  
Ten (10) pieces wide stack one inside the other.

### PALLET SIZE

Two (2) pallets of 24"x 44"  
(spaced from each other).

### MAXIMUM TOTAL HEIGHT (pallet included)

± 66"

### TOTAL POUNDS PER PALLET

± 1 100 lb (1.07 lb/pl)\*.

\*This information is based on a 1000' pallet of 4 1/4" x 1 1/16" nosings.

### PACKING METHOD

- Wood stickers are installed between the pallet and the products.
- Wood stickers are installed every ten (8) rows to stabilize the load.
- Every ordered item (SKU) that meets 500' is separated by two (2) wooden blocks.
- Wood stickers are used to separate products under 500'.
- Total of four (4) nylon straps. Two (2) nylon straps are fastened to each pallet.
- Each pallet is covered in clear shrink wrap.